

## TEST REPORT

**NUMBER:** LTR22080126A

**APPLICANT:** Ink Experts Ltd  
Unit 6C Wednesfield Business Park  
Waddens Brook Lane  
Wolverhampton  
WV11 3SF

**DATE:** 23 August 2022

For the attention of Alex Goodier

**SAMPLE DESCRIPTION:** White Dry Powder (Hot Melt Adhesive Powder)

**REFERENCE / STYLE NO.:** Fusion DTF PET Film Powder

**BATCH NO.:** 4-1822

**RETAILER:** Ink Experts Ltd

**SAMPLES RECEIVED:** 17 August 2022

**PURCHASE ORDER:** None

**TEST REQUEST:** ^BS EN 71-3: 2019+A1:2021, EN 71-3: 2019+A1:2021

**CONCLUSION:** The results of the tests carried out **MEET** the requirements of the requested Standard

Tests marked (^) in this report are included in the scope of accreditation of the sub-contractor who performed the test.

Tests marked (\*) in this report are not included in our UKAS scope of accreditation.

Tests marked (\*\*) in this report are not included in the scope of accreditation of the sub-contractor who performed the test.

Opinions, interpretations and comments expressed herein are outside the scope of accreditation.



**GEORGE HALL**  
**QHSE MANAGER**

## TEST REPORT

**NUMBER:** LTR22080126A

**Specification:** BS EN 71-3: 2019+A1:2021, EN 71-3: 2019+A1:2021

Acid extraction method was used and migration elements content were determined by Inductively Coupled Plasma-ICP-MS

Category	TEST	RESULTS
I	Dry/brittle/powder like	Pass

**Note:** The results for chromium (III), chromium (VI) and organic tin are based on the overall migration of chromium and tin respectively and specific testing for these chemicals was not carried out (unless confirmation testing is indicated). This is in accordance with Annex I of the standard.

### MATERIALS SAMPLED

No.	DESCRIPTION	Sample weight (<100mg)
	<b>CATEGORY I – DRY / BRITTLE ETC.</b>	
1	Hot melt adhesive powder	

Where sample weights are written above these were less than 100 mg. The migration results below for these samples have been calculated as though the sample weight were 100 mg.

### CATEGORY I – DRY / BRITTLE ETC.

Element	Analytical Results																	Theoretical Maximum Results		
	Sb	As	Ba	Cd	Cr	Pb	Hg	Se	Al	B	Co	Cu	Mn	Ni	Sr	Sn	Zn	Cr (III)	#Cr (VI)	##OT
EN71-3 Limit	45	3.8	1500	1.3	–	2.0	7.5	37.5	2250	1200	10.5	622.5	1200	75	4500	15000	3750	37.5	0.02	0.9
1	<0.2	<0.1	<100	<0.125	<0.004	<0.125	<0.05	<3	<400	<100	<0.5	<50	<100	<6	<250	<0.2	824.1	<0.004	<0.004	<0.2

The reporting limits are as stated in the table above.

OT = Organic tin

All results and the limits are quoted as mg/kg (ppm) of the named material.

† Sample weight of items marked with a cross was less than 100mg. The toxic metal content has been calculated as though the sample weight were 100mg.

*# Actual levels of chromium (III) or chromium (VI) have not been determined in this analysis, only overall levels of migratable chromium (III) have been analysed: the maximum theoretical amount of chromium (VI) will be equal to or less than the number reported above. Where the value in either of these columns is greater than the associated limit we would advise further testing to accurately determine chromium (III) chromium (VI) levels.*

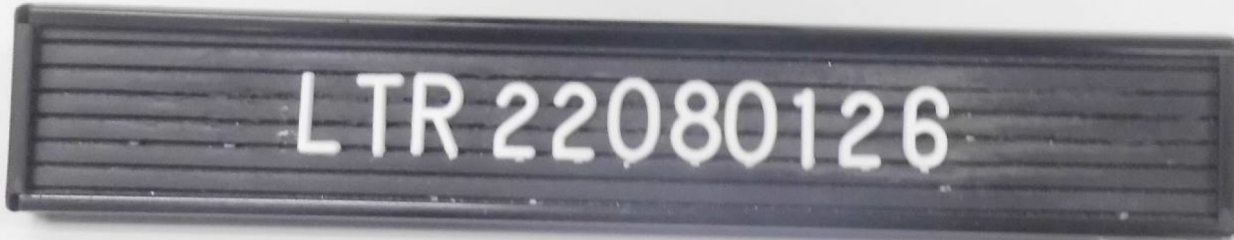
*In the case of Category 2 samples we advise testing for chromium (III) and chromium (VI) is carried out on all samples due to the very low PASS/FAIL limit related to these materials*

## TEST REPORT

**NUMBER:** LTR22080126A

**##** Actual levels of organic tin have not been determined in this analysis: the maximum theoretical amount of any single organic tin can be different. The result for organic tin presented is calculated as if all the tin were present as TBT (Tri-butyl Tin) only.

**Date of Testing:** 18–22 August 2022



## END OF REPORT

*This report is made solely on the basis of your instructions and/or information and materials supplied by you and all results relate only to the sample tested. It is not intended to be a recommendation for any particular course of action. Intertek does not accept a duty of care or any other responsibility to any person other than the Client in respect of this report and only accepts liability to the Client insofar as is expressly contained in the terms and conditions governing Intertek's provision of services to you. Intertek makes no warranties or representations either express or implied with respect to this report save as provided for in those terms and conditions. We have aimed to conduct the Review on a diligent and careful basis and we do not accept any liability to you for any loss arising out of or in connection with this report, in contract, tort, by statute or otherwise, except in the event of our gross negligence or wilful misconduct.*